

Expressions of Interest Guidelines

EXPRESSIONS OF INTEREST (EOIs) FOR CCP'S 2020 EXHIBITION PROGRAM AND NIGHT PROJECTION WINDOW ARE NOW OPEN!

EOIs are now accepted in two, discrete streams: one for exhibition based proposals, and one for video works to be screened on the CCP Night Projection Window:

EXHIBITION PROGRAM EOI

Please note that CCP's EOI process for exhibitions has now changed. We ask that you simply share your latest, most compelling project with us for consideration of inclusion in the 2020 Artistic Program. We no longer require you to pitch your work for a specific gallery space or exhibition dates. Successful EOI applicants for the exhibition stream will be invited to participate in CCP curated projects between June—July 2020.

NIGHT PROJECTION WINDOW (NPW) EOI

CCP's Night Projection Window (NPW) is our public facing, dedicated projection space, visible from the exterior of the building on George Street, 7-nights a week after dark. Successful applicants for the Night Projection Window will be programmed across 2020.

WHO CAN APPLY

EOIs are accepted from artists and collaborators from all career levels, however please note that we are not considering curatorial projects for 2020 at this time. CCP welcomes applicants from culturally and linguistically diverse backgrounds, Aboriginal and Torres Strait Islanders, LGBTQIA+ practitioners and people with lived experience of disability.

Please note that CCP receives many more EOIs than we are able to support. Due to high demand, CCP staff are not able to offer feedback to unsuccessful applicants.

ABOUT CCP

The Centre for Contemporary Photography (CCP) is Australia's premiere space dedicated to the public engagement and presentation of contemporary lens-based practice. Located in Melbourne's culturally diverse and vibrant Fitzroy; land of the Wurundjeri people and part of the Kulin Nations, CCP draws a broad onsite audience of over 90,000 visitors per year. CCP further engages the community through participation in festivals and events, and the touring of exhibitions to regional Victorian venues, interstate, and abroad.

CCP plays a pivotal role in the development of photographic art practice and discourse with photography. Through exhibitions, public programming, education and publishing, CCP places contemporary Australian photography, video and expanded photographic practice within a historical and international context. CCP supports Australian artists by providing exhibition opportunities for early-career practitioners, educational experiences for aspiring creatives, commissioned research projects for mid-career artists, and opportunities for established artists to push the boundaries of their practice.

EXPRESSIONS ON INTEREST DUE
Midnight, Sunday 15 September, 2019

CCP EXHIBITIONS EOI 2020

Apply now

CCP NIGHT PROJECTION WINDOW EOI 2020

Apply now

APPLICATION PROCESS

Please complete the online Expression of Interest form on the CCP website, which involves:

- A 150 word creative rationale
- A 150 word physical description of your most recent work
- Support material, including:
 - Up to 10 high-resolution images in .jpg format for exhibition-based applicants (max 1mb each)
 - Up to 5 web links to video and moving-image works for Night Projection Window applicants (Vimeo, YouTube, Soundcloud etc)
 - A one page CV
 - A list of attachments (where applicable)

Please note that CCP will only accept digital applications.

Expressions of Interest are considered by an Exhibition Advisory Committee that includes the CCP Director, CCP Curator of Exhibitions, CCP Curator of Engagement, a representative from CCP's Board, and independent arts professionals.

INSTALLATION

CCP provides curatorial and technical support to successful applicants, however installation and de-installation remains the responsibility of the exhibitor. Advice should be sought prior to the exhibition with CCP staff. Approval must be sought before any alteration to the gallery is made (eg. paint colour, surface, partition). The artist must pay and arrange for any alteration and subsequent return of the gallery to its original condition.

INSURANCE

Please note that artist's work and any technical equipment that accompanies the exhibition, which is not supplied by CCP, are covered by CCP's contents insurance up to the value of \$5,000. Beyond this value, exhibiting practitioners should consult with CCP about the possibility of additional coverage. Practitioners whose exhibition involves technical equipment must discuss insurance arrangements in advance with CCP staff and in most cases, must cover additional costs incurred.

EQUIPMENT

CCP has a range of technology and equipment available for use by exhibiting artists. Artists wishing to use CCP equipment must contact the gallery for further details. Bookings need to be made well in advance to ensure availability. Exhibitors are welcome to utilise their own equipment, pending discussion with CCP staff. All electrical equipment must be tagged and tested at the exhibitor's expense before use.

TIPS FOR APPLICANTS

- Use clear, simple and legible language
- Ensure support material is of the highest possible quality and relates directly to your proposed idea in order to best represent your Expression of Interest
- Clearly indicate whether the supporting images are the works to be exhibited or are indicative of new work

FOR INFORMATION AND ASSISTANCE

Should you have any difficulty accessing, interpreting or completing your Expression of Interest, please contact CCP at: info@ccp.org.au or phone (03) 9417 1549 and request to speak to CCP Curator of Exhibitions, Madé Spencer-Castle.

EXHIBITORS IN ALL EXHIBITION SPACES RECEIVE AN ARTIST FEE FROM CCP.

GALLERY 1

Ceiling height: 3180mm
Walls: steel-studded MDF & plaster
Floors: concrete
Lighting: Halogen lamps & floods
30.8m of running wall space

GALLERY 2

Ceiling height : 3180mm
Walls: steel-studded MDF & plaster
Floors: concrete
Lighting: Halogen lamps & floods
25.4m of running wall space

GALLERY 3

Ceiling height: 3180mm
Walls: steel-studded MDF & plaster
Floors: concrete
Lighting: Halogen lamps & floods
Technical: Fixed data projector
40.4m of running wall space

GALLERY 4

Ceiling height: 3180mm
Walls: steel-studded MDF & plaster
Floors: concrete
Lighting: Halogen lamps & floods
11.7m of running wall space

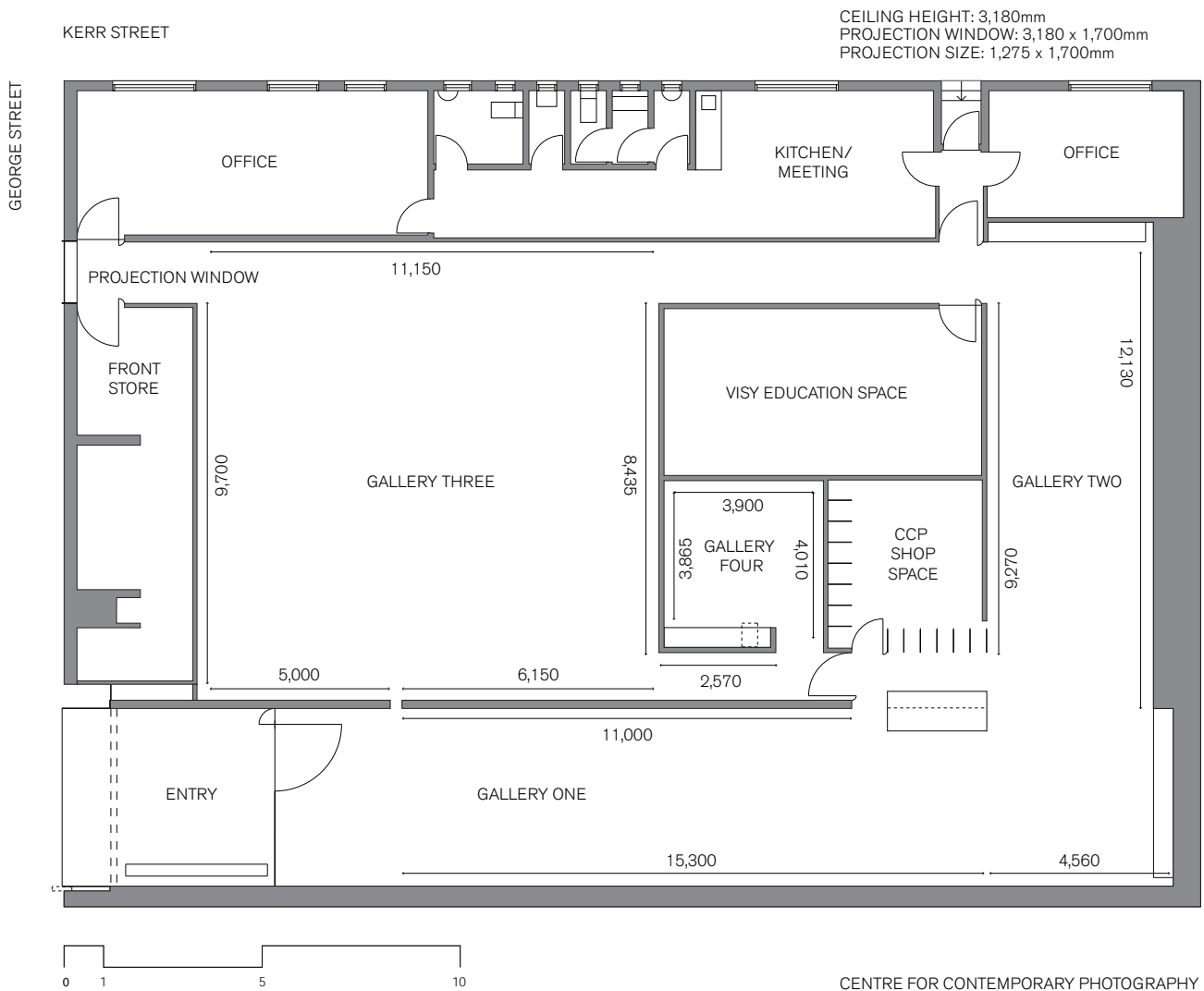
NIGHT PROJECTION WINDOW

Viewed from the exterior of the building
Ceiling height: 3180mm
Window: 3180mm x 1700
Projection size: 1275mm x 1700 (3:4 ratio)
Technical: Fixed data projector
Projection: Seven nights a week after dark

PLEASE NOTE

CCP does not have climate control in any of the exhibition spaces.

CCP Floorplan



CENTRE FOR CONTEMPORARY PHOTOGRAPHY

Centre for Contemporary Photography
404 George Street, Fitzroy, Victoria, 3065
TELEPHONE +613 9417 1549
EMAIL info@ccp.org.au
WEBSITE www.ccp.org.au
GALLERY HOURS
Wednesday—Friday 11am—5PM
Saturday—Sunday 12—5PM



Centre for Contemporary Photography is supported by the Victorian Government through Creative Victoria and is assisted by the Australian Government through the Australia Council, its principal arts funding and advisory body. Centre for Contemporary Photography is supported by the Visual Arts and Craft Strategy, an initiative of the Australian, state and territory governments. CCP is a member of CAOA Contemporary Arts Organisations of Australia.