



404 George Street
Fitzroy Melbourne
VIC 3065 Australia
ABN 14 081 414 273

t +613 9417 1549
info@ccp.org.au
www.ccp.org.au

CCP EXPRESSION OF INTEREST GUIDELINES

Expressions of Interest may be submitted to CCP at any time during the year and are reviewed annually for the following year's program. Please check the website for the deadline for the next review process.

Exhibitions in CCP's five spaces change approximately every seven or eight weeks and feature the work of local, interstate, and international artists. Expressions of Interest are accepted from artists and curators and are limited to one per applicant, per year. These are considered by an exhibition advisory committee that includes the CCP Director, CCP Curator, CCP Program Manager and a representative from CCP's Board of Management as well as two independent arts professionals.

Expressions of Interest should clearly indicate whether the supporting images are the works to be exhibited or indicative works.

Due to high demand, Expressions of Interest for exhibitions will not be considered from artists who presented or will present solo exhibitions at CCP in the current or previous year.

Curatorial projects should be new exhibitions rather than exhibitions that have previously been exhibited in Australia.

GENERAL INFORMATION

Designed by award winning Melbourne architect, Sean Godsell, the purpose-built CCP provides contemporary photography with a home worthy of international acclaim. Located in the heart of Melbourne's Fitzroy gallery and cafe precinct, CCP draws a broad audience of approximately 2,500 visitors per exhibition. The gallery is open to the public Wednesday to Friday 11am–6pm and Saturday to Sunday 12–5pm or otherwise by arrangement with the Director. The CCP Night Projection Window is screened on the exterior of the building seven nights a week after dark.

Openings are held on Thursday evenings with exhibition installation commencing on the Tuesday preceding the opening. The opening bar is managed by CCP staff and volunteers and food is not provided. Artist floor talks are held on the Saturday following the opening of the exhibition and all exhibiting artists are expected to participate.

CCP produces a standard electronic exhibition notification emailed directly to a database of over 6,000 subscribers, and has over 27,000 social media contacts through Facebook, Twitter and Instagram. CCP promotes exhibitions through its media channels, but cannot guarantee reviews. CCP does not provide financial assistance with freight or catalogue production without special arrangement or additional funding.

Artists must pay the costs of freighting their work to and from the gallery and install and de-install their work, or pay for professional installation. CCP can arrange this installation on your behalf.

EXHIBITORS IN ALL THE EXHIBITION SPACES **RECEIVE** AN ART LOAN FEE FROM CCP.
FEES ARE AS FOLLOWS:

Gallery One \$700

Gallery Two \$700

Gallery Three \$1,400

Gallery Four \$700

Night Projection Window \$500

For curated projects, CCP will provide the applicable gallery art loan fees determined by the number of gallery spaces involved in the curated project, and can provide advice to successful applicants seeking additional funding from other sources.

GALLERY SPECIFICATIONS

GALLERY 1

Ceiling height • 3180mm
Walls • steel-studded MDF & plaster
Floors • concrete
Lighting • Halogen lamps & floods

GALLERY 2

Ceiling height • 3180mm
Walls • steel-studded MDF & plaster
Floors • concrete
Lighting • Halogen lamps & floods

GALLERY 3

Ceiling height • 3180mm
Walls • steel-studded MDF & plaster
Floors • concrete
Lighting • Halogen lamps & floods
Technical • Fixed data projector

GALLERY 4

Ceiling height • 3180mm
Walls • steel-studded MDF & plaster
Floors • concrete
Lighting • Halogen lamps & floods
Technical • Fixed data projector

NIGHT PROJECTION WINDOW

Viewed from the exterior of
the building

Ceiling height • 3180mm
Window • 3180mm x 1700
Projection size • 1275mm x 1700 (3:4 ratio)
Technical • Fixed data projector
Projection • Seven nights a week after dark

INSTALLATION

Installation and de-installation are the responsibility of the exhibiting artist(s). Advice and assistance should be sought from CCP staff, however CCP does not provide professional installation staff. CCP can provide advice on preferred installation technicians if required and make the arrangements on the behalf of artists. The Director's approval must be sought before any alteration to the gallery is made (eg. colour, surface, partition). **The artist must pay and arrange for any alteration and subsequent return of the gallery to its original condition, which in many instances must be undertaken by CCP's preferred contractors.**

INSURANCE

Please note that the artist's work and any technical equipment that accompanies the exhibition, which is not supplied by CCP, are covered by CCP's contents insurance up to the value of \$5,000. Beyond this value, exhibiting artists and guest curators should consult with CCP about the possibility of additional coverage. Any artist or curator whose exhibition involves technical equipment must discuss insurance arrangements in advance with the CCP Program Manager and in most cases, must cover additional costs incurred.

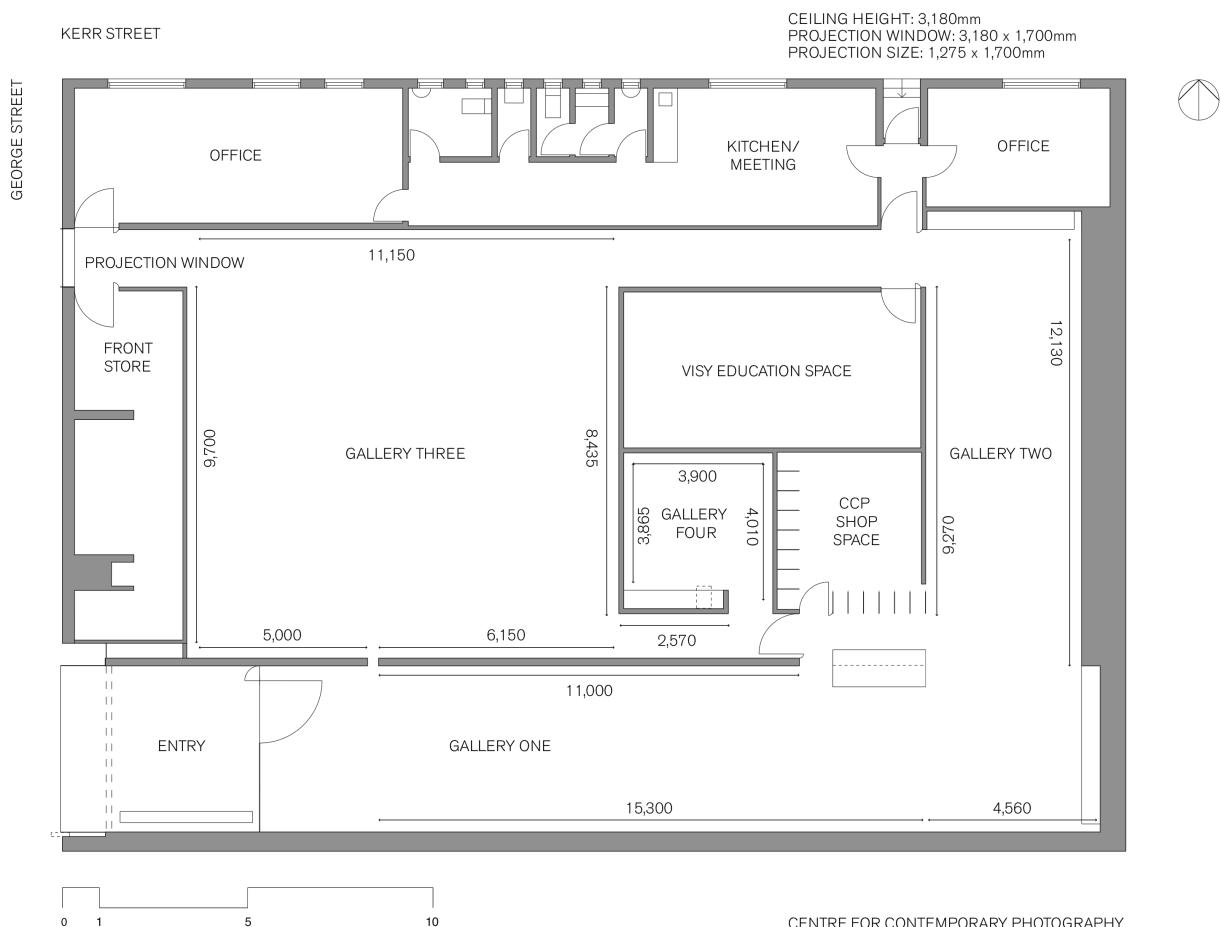
EQUIPMENT

CCP makes some equipment available for use by exhibiting artists. In some cases, a nominal fee is charged. Artists wishing to use CCP equipment must contact the gallery for further details. Bookings need to be made well in advance.

PLEASE NOTE: CCP DOES NOT HAVE CLIMATE CONTROL IN ANY OF THE EXHIBITION SPACES.

GALLERY FLOORPLAN

LINE APPROXIMATES HANGING SPACES



2017 EXHIBITION ADVISORY COMMITTEE MEMBERS

CCP REPRESENTATIVES

STAFF

Naomi Cass Director

Pippa Milne Curator

Michelle Mountain Program Manager

The exhibition advisory committee will additionally include a member of the CCP Board of Directors and two independent arts professionals selected at the discretion of CCP Director.